

SANDPIPER at Aviara

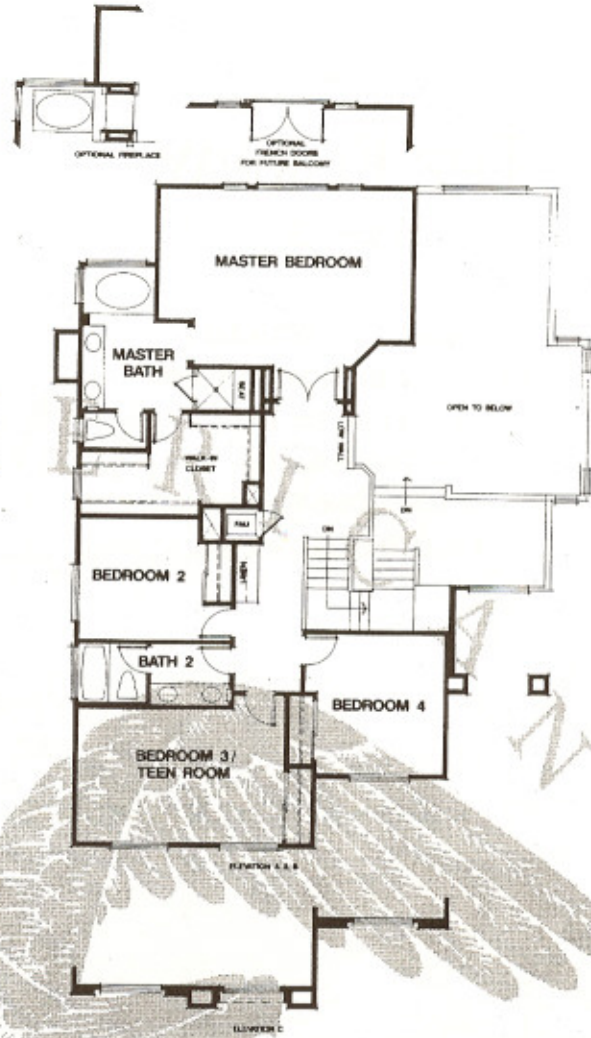
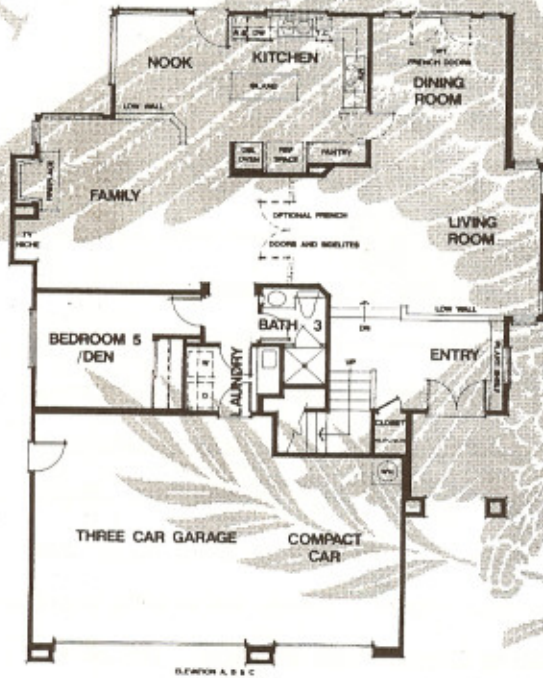
THE LAGOON

Plan 4

Two-Story • Five Bedrooms

Or Four Plus Den

- Three Full Baths
- Three-Car Garage
- 2,806 Square Feet



Large, open living areas set the stage for entertaining family and friends in style. The centrally located kitchen provides easy access to the dining room, breakfast nook and family room that includes a woodburning fireplace and TV niche. For added versatility, a lower-level bedroom can easily double as a den or home office. Upstairs, you'll find three secondary bedrooms and a spacious master suite with sitting area, a large walk-in closet and optional fireplace and French doors. Each Warmington home is complete with rear- and side-yard fencing, copper water lines and an interior laundry service area with sink and cabinets.

