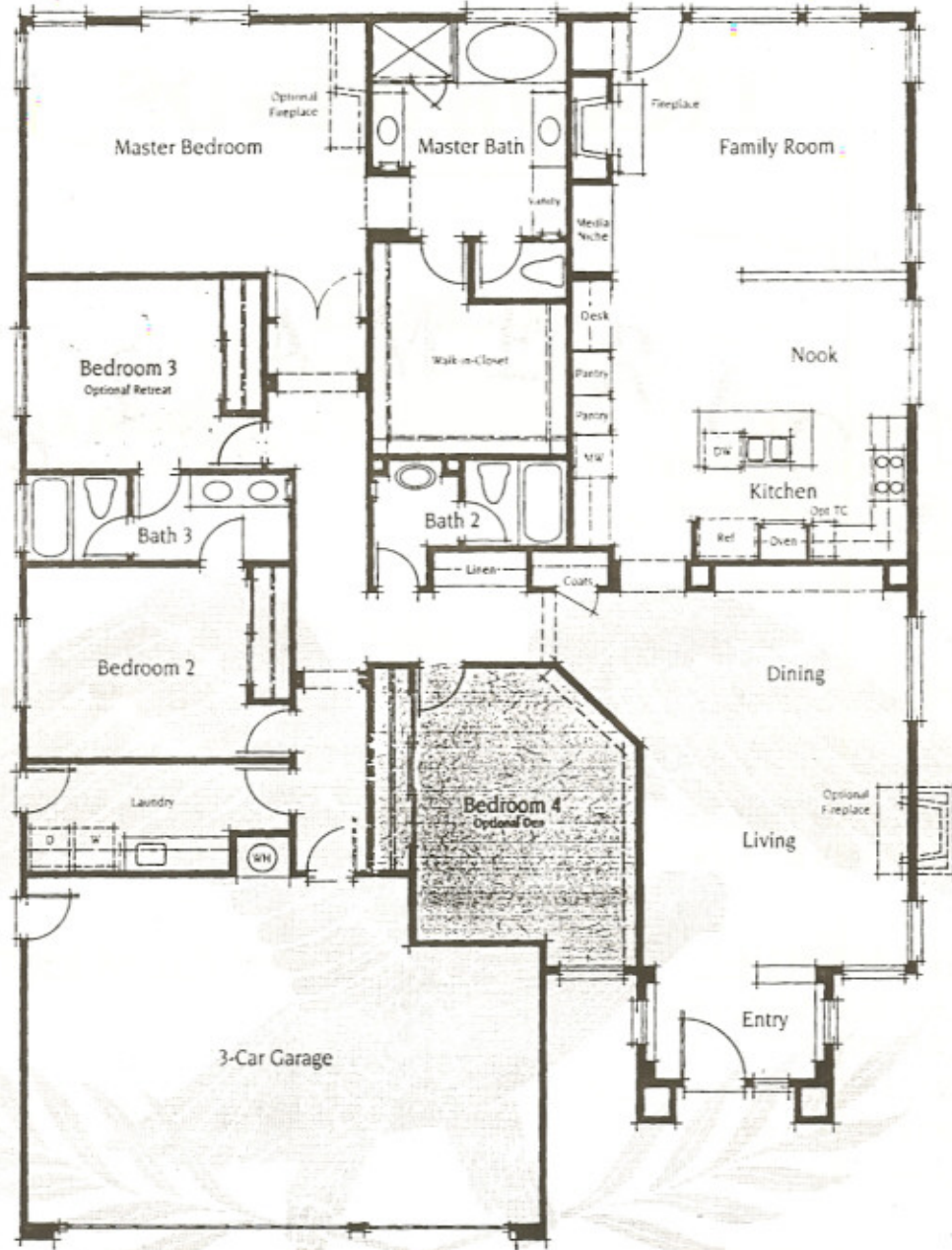


P L A N O N E

Mariner



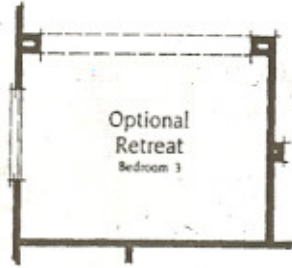
G A T

Graphic Architects

TERRA AUSTRALIS

Mariner

PLAN ONE



2,700 Square Feet

Four Bedrooms

Three Baths

Options

Retreat at Bedroom 3

Den at Bedroom 4



L A N I

C A

*Author: Washington, 1792
D. G. Smith, Paris, F. Hoch, July
to Ripon, Antiquarian Court
July 1841, with notes on
Columb. How universal sea
specimens taken by sailors*